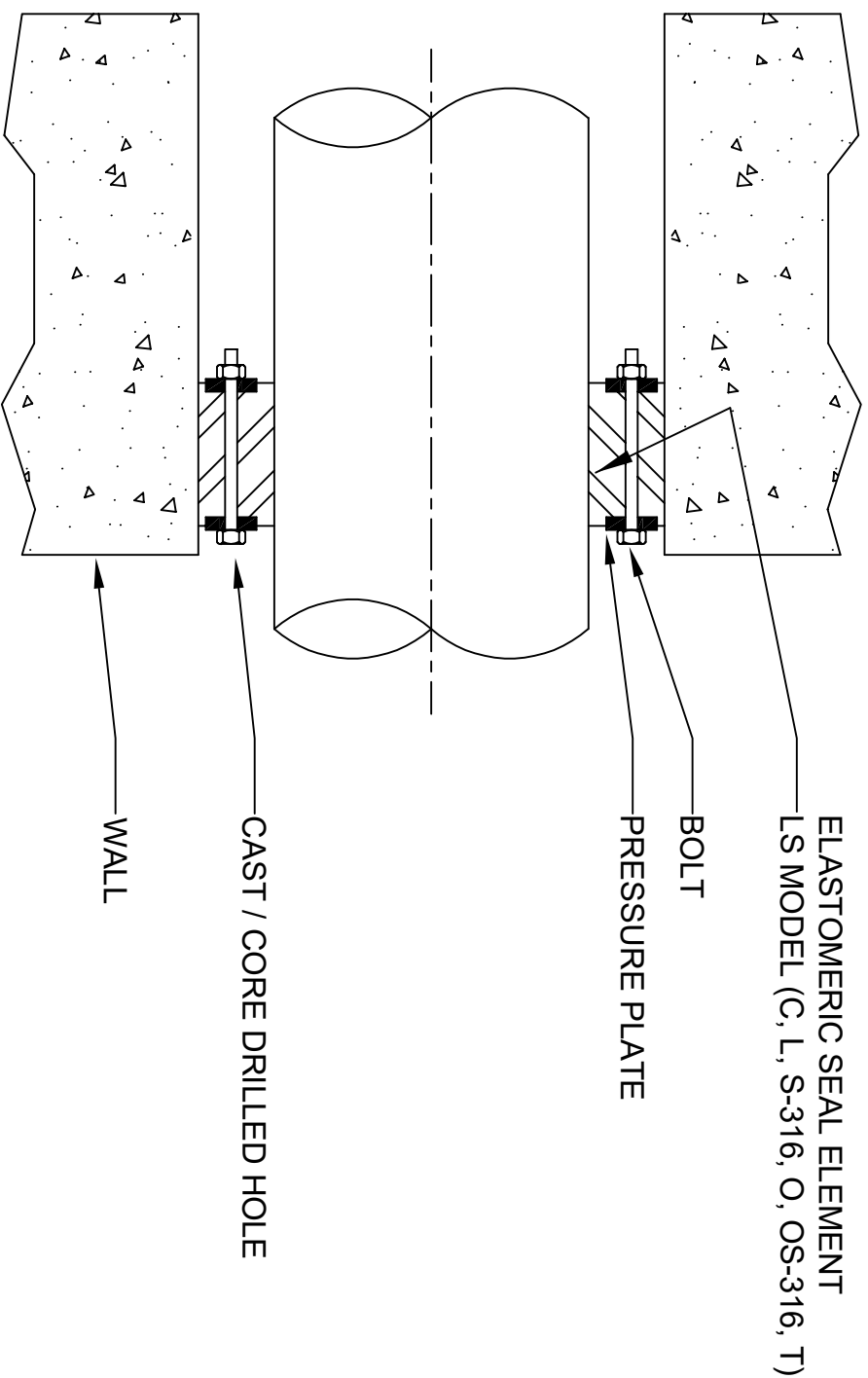


LINK-SEAL® MODULAR SEALS WITH CAST OR CORE DRILLED WALL OPENING
 MANUFACTURED BY GARLOCK SEALING TECHNOLOGIES
 HOUSTON, TEXAS, U.S.A. TEL: 800-448-6688 E-MAIL: GSTPIPELINEPRODUCTS@GARLOCK.COM



LS Model	Seal Element	Bolts/Nuts	Pressure Plate	
C	EPDM (Black)	Zinc Dichromate/Organic Coated Carbon Steel Bolt	Reinforced Nylon Polymer	
L	EPDM (Blue)	Zinc Dichromate/Organic Coated Carbon Steel Bolt	Reinforced Nylon Polymer	
O	Nitrile	Zinc Dichromate/Organic Coated Carbon Steel Bolt	Reinforced Nylon Polymer	
T	Silicone	Zinc Dichromate/Organic Coated Carbon Steel Bolt	Steel Zinc Dichromate	
(C,L,O)+S-316 (see model options) 316 Stainless Steel				
			Reinforced Nylon Polymer	

Sleeve Model	Description	Material
CS	Century-Line Sleeve	HDPE
WS	Steel Wall Sleeve	Steel