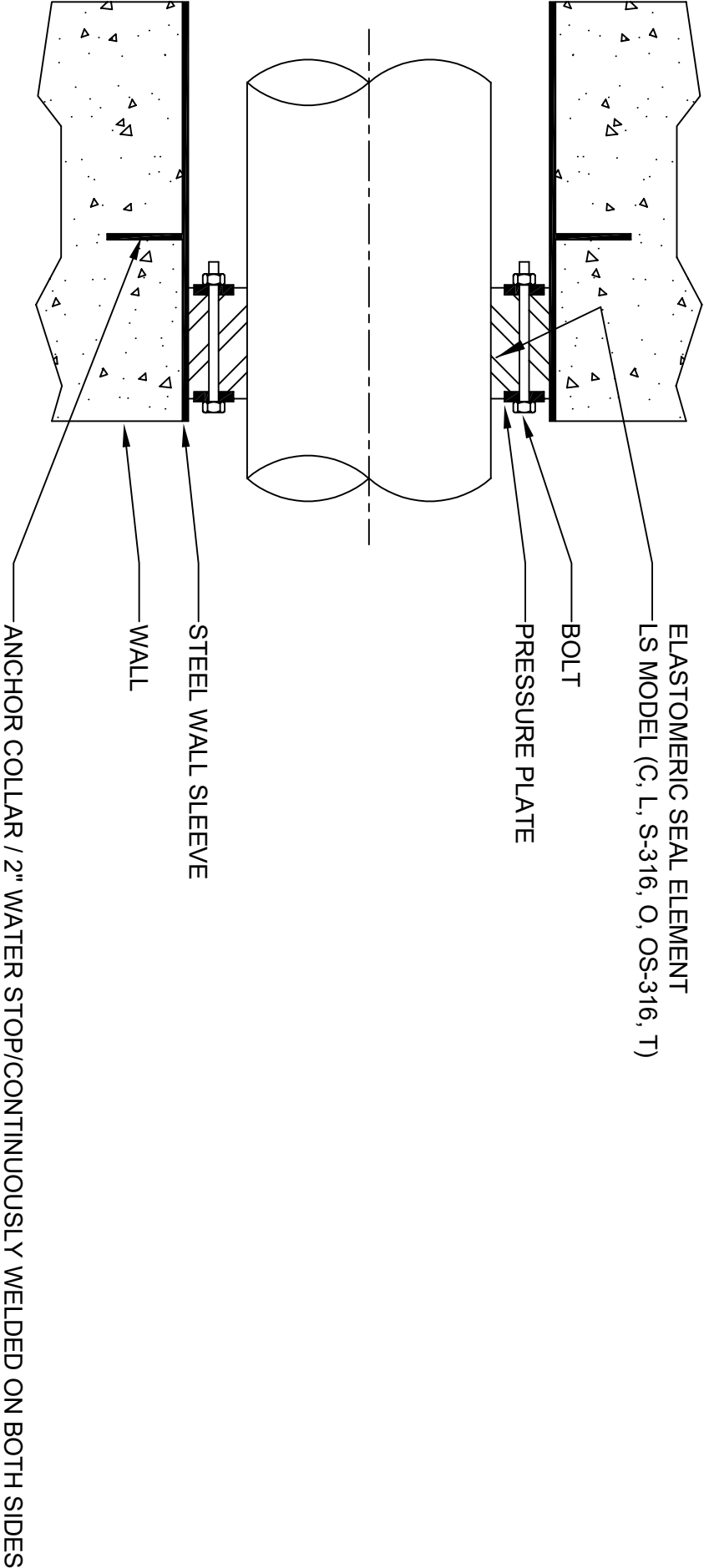


LINK-SEAL® MODULAR SEALS WITH MODEL WS STEEL WALL SLEEVES
 MANUFACTURED BY GARLOCK SEALING TECHNOLOGIES
 HOUSTON, TEXAS, U.S.A. TEL: 800-448-6688 E-MAIL: GSTPIPELINEPRODUCTS@GARLOCK.COM



LS Model	Seal Element	Bolts/Nuts	Pressure Plate
C	EPDM (Black)	Zinc Dichromate/Organic Coated Carbon Steel Bolt	Reinforced Nylon Polymer
L	EPDM (Blue)	Zinc Dichromate/Organic Coated Carbon Steel Bolt	Reinforced Nylon Polymer
O	Nitrile	Zinc Dichromate/Organic Coated Carbon Steel Bolt	Reinforced Nylon Polymer
T	Silicone	Zinc Dichromate/Organic Coated Carbon Steel Bolt	Steel Zinc Dichromate
(C,L,O)+S-316	(see model options)	316 Stainless Steel	Reinforced Nylon Polymer

Sleeve Model	Description	Material
CS	Century-Line Sleeve	HDPE
WS	Steel Wall Sleeve	Steel

For more Material Property Information, see literature at www.garlock.com